

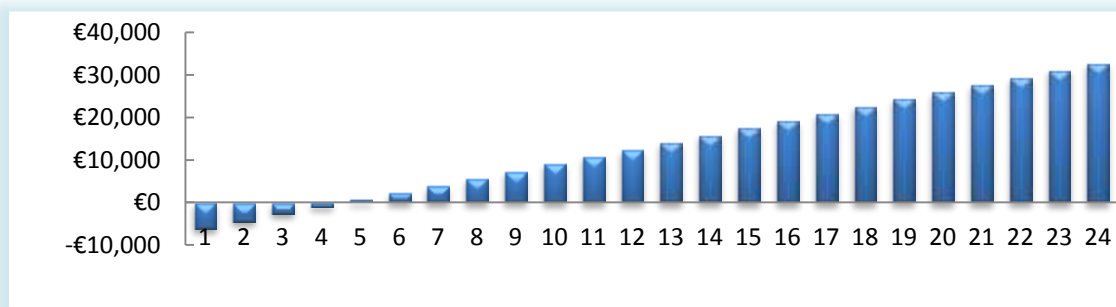
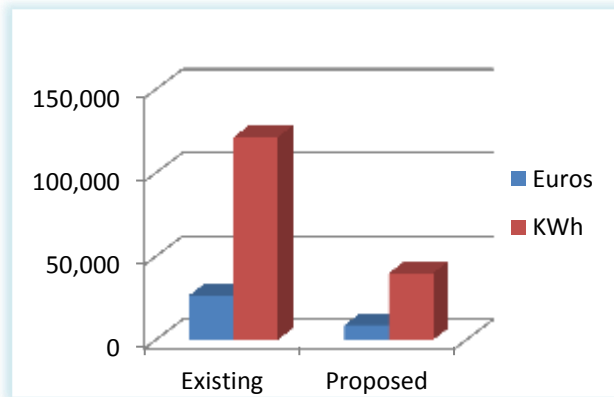
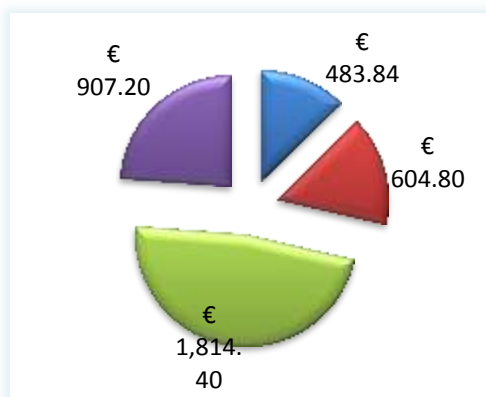
**Potential savings analysis:**

With customers collaboration , we will collect all necessary data on your current lighting technology . These will be analyzed and summed in a peristaltic study including:

- Energy analysis study , detailed representation of the percent savings in energy consumption in electricity.
- The reduction of CO2 emissions
- Technical - economic study to know the economic base that will evaluate customers investment, including the average payback period and ROI.

The results of this study will contribute the exact footprint of the building associated only with lighting.

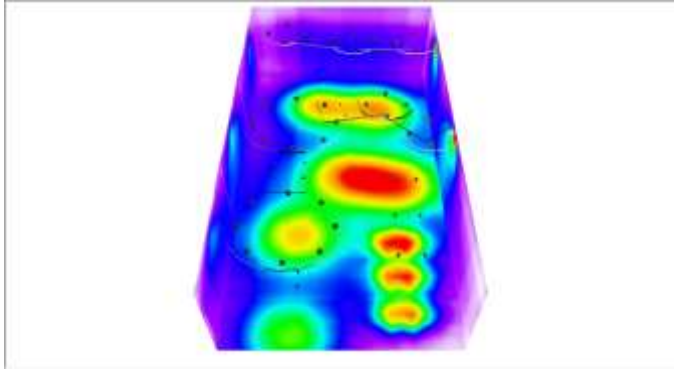
This study will obligate all necessary information for the LED replacing project.



**Optorealistic study:**

Through specialized software we provide a 3D study for every interior and exterior area. The goal is to achieve optimum illumination in all areas that will take the LED lighting.

Proper selection and classification of LED fixtures will help increase human efficiency and in addition low operating and maintenance costs compared to conventional lighting systems.



With the combination of these two studies customer formed a comprehensive representation of the potential investment in the field of lighting to reap the maximum benefits from the savings that will pronounce the LED.